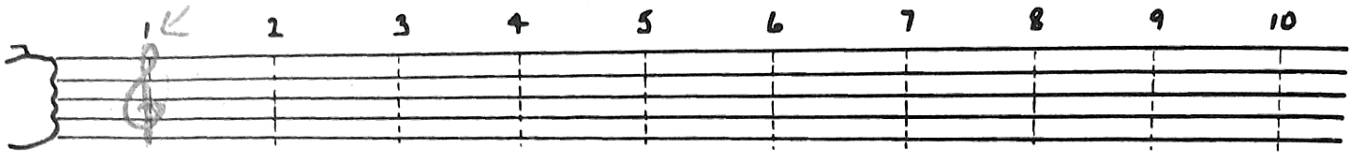


DRAW MY TREBLE CLEF  
 AT THE START OF EACH STAFF.  
 THEN WRITE NOTES YOU'RE ASKED  
 ALONG DOTTED PATHS.

NAME \_\_\_\_\_

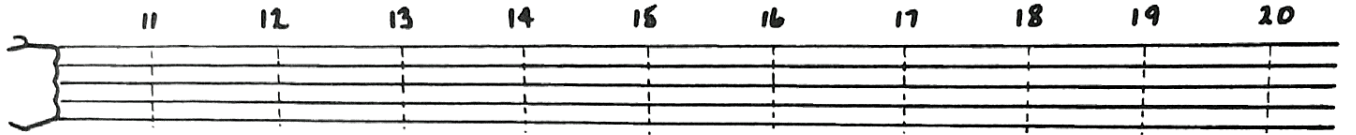
Quiz 1-7

*This is what your  
 treble clefs should look like.*



TREBLE CLEF ↗

WRITE NOTES ON LINES	F	E	C	A	F	A	E	C	F
----------------------	---	---	---	---	---	---	---	---	---



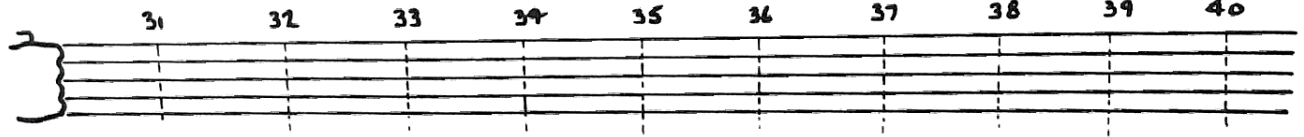
TREBLE CLEF ↗

WRITE NOTES IN SPACES	B	G	E	D	F	G	E	B	D
-----------------------	---	---	---	---	---	---	---	---	---



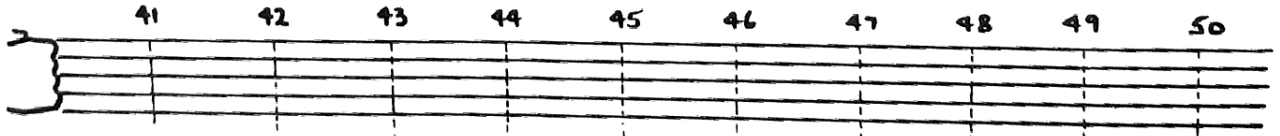
TREBLE CLEF ↗

ON LINES:	E	G	B	D	
IN SPACES:	F	A	C	E	C



TREBLE CLEF ↗

ON LINES:	F	E	B	G	D
IN SPACES:	F	C	E	A	



TREBLE CLEF ↗

ON LINES:	E	F	D	B	G
IN SPACES:	E	F	C	A	

